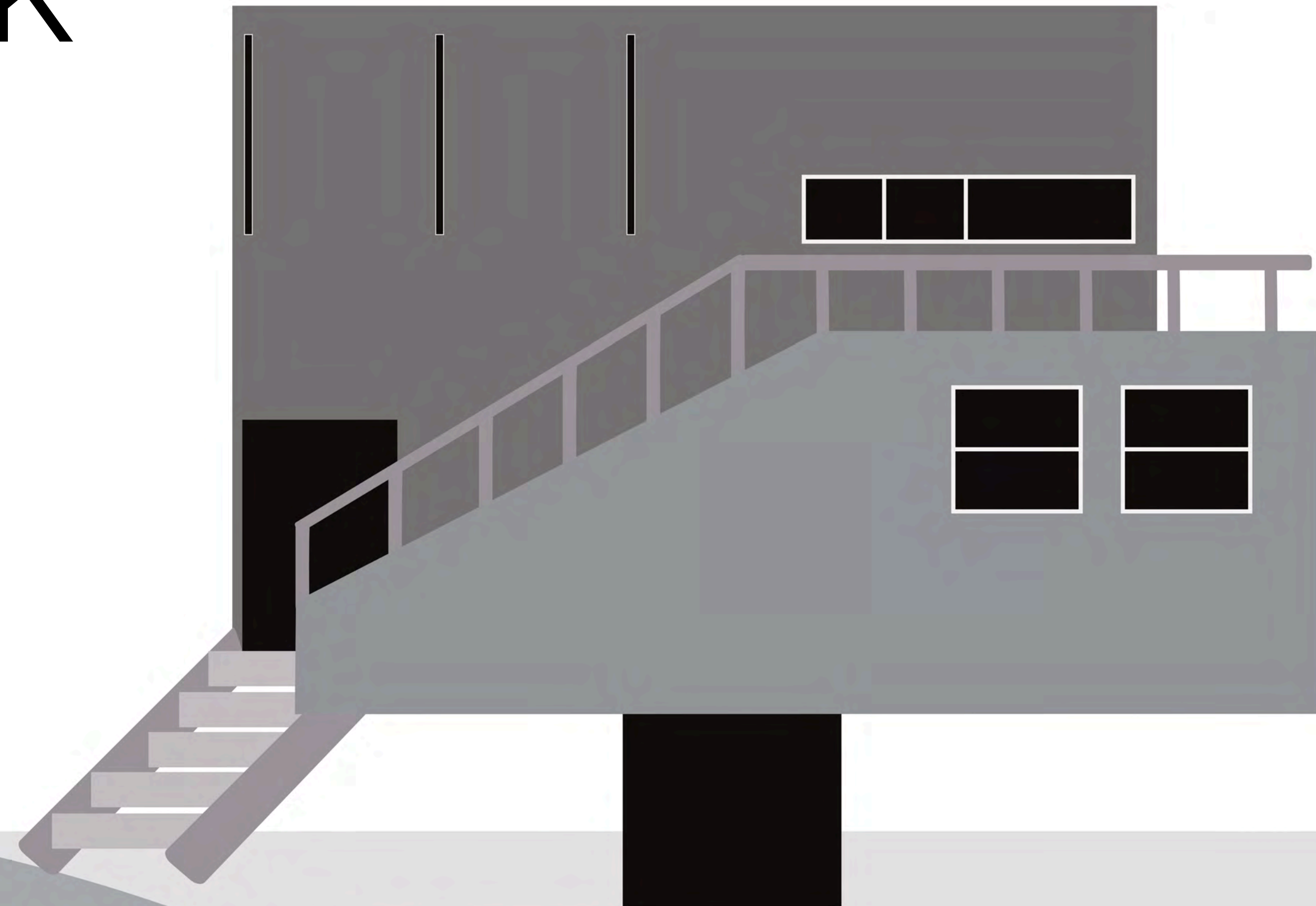


Dan Klyn 2022

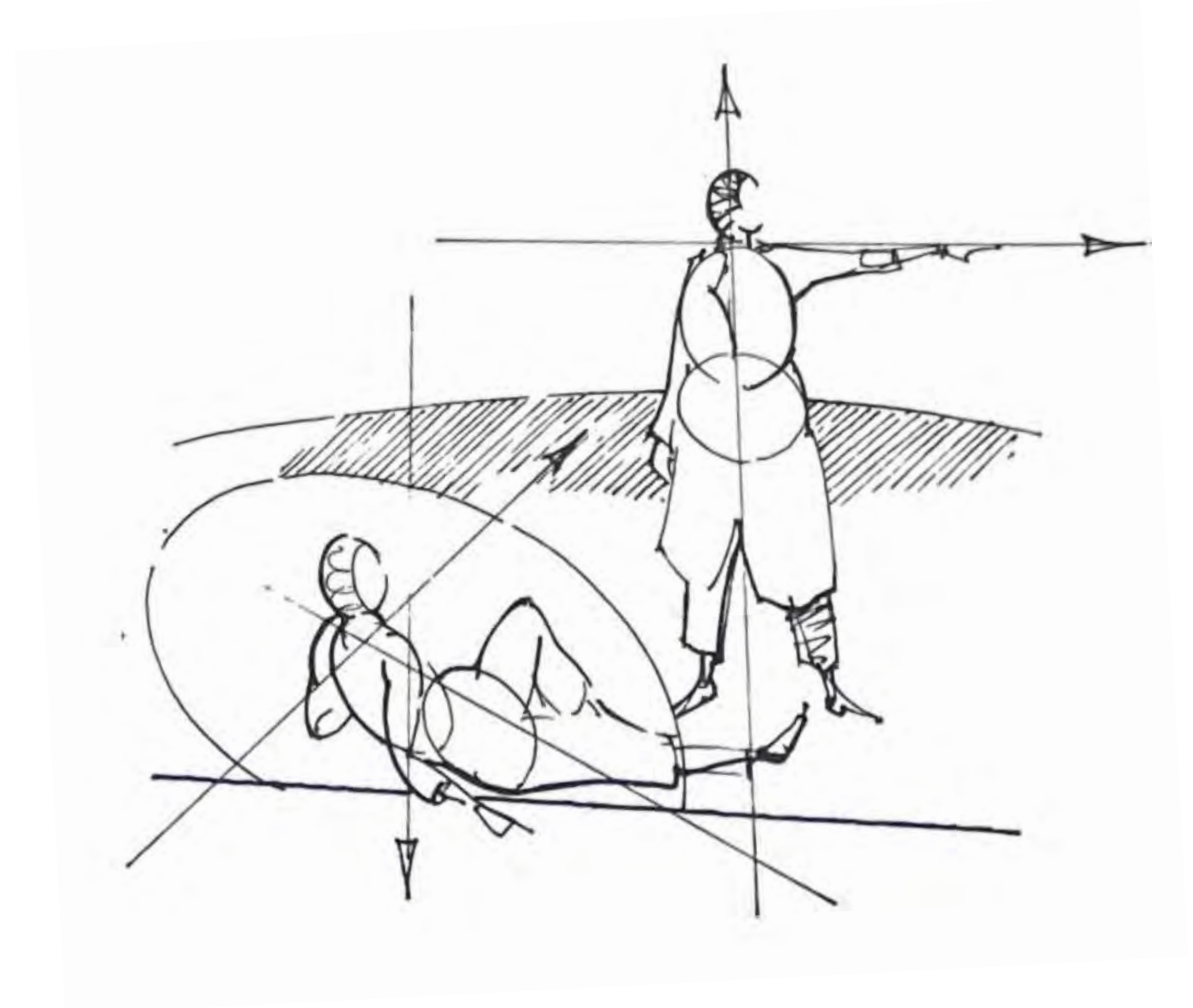
5 Ways to See the Architecture of Complex Systems

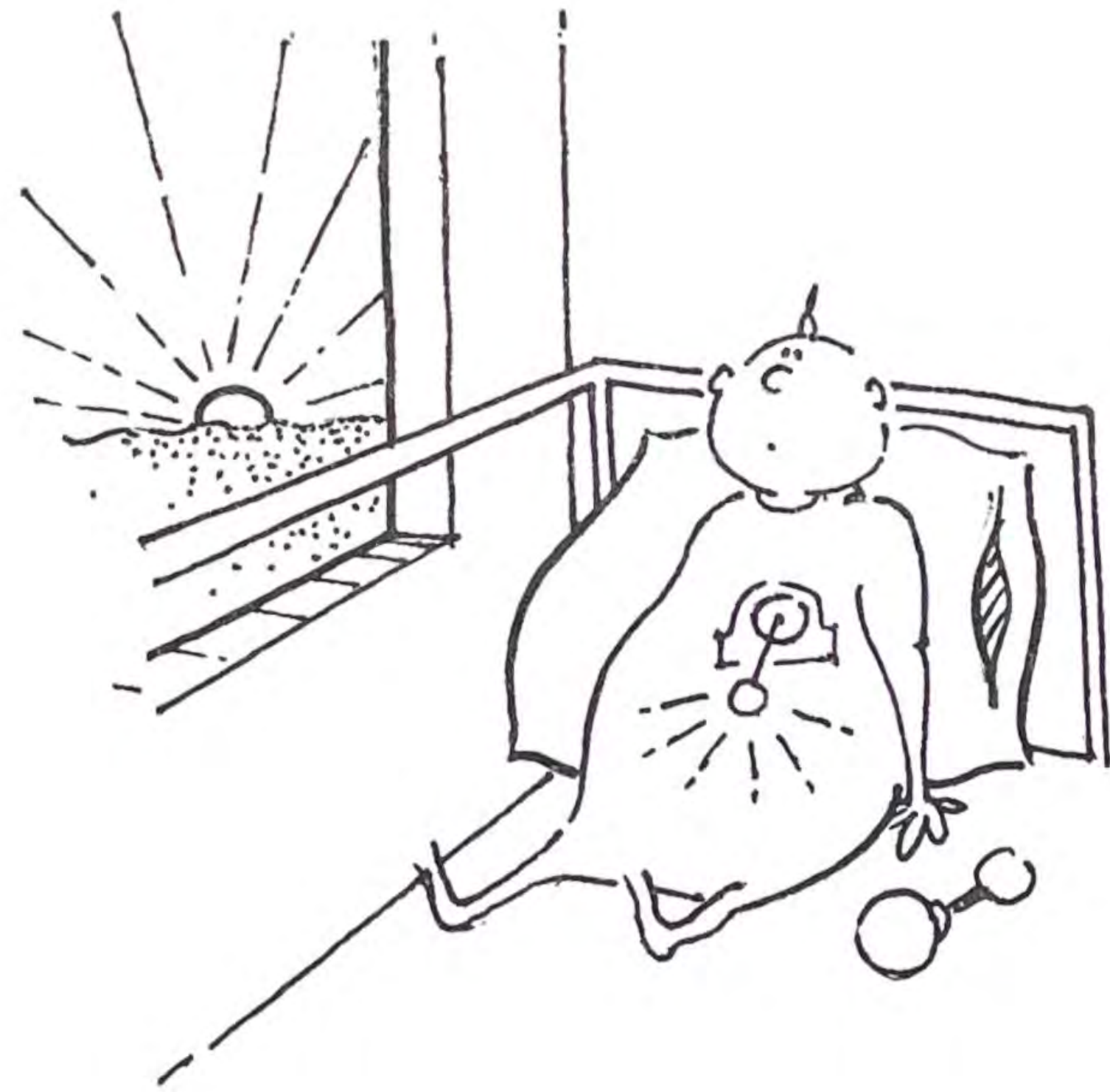
# **BASIC** framework



# BASIC

5 Ways To See The Architecture  
Of Complex Systems





**Boundaries**  
**Associations**  
**Situations**  
**Invariants**  
**Cycles**



“We must look for a long time before we can see.”  
—H.D. Thoreau

# Boundaries



# Associations



# Situations





ONE  
WAY  
←

Invariants



KODAK TR



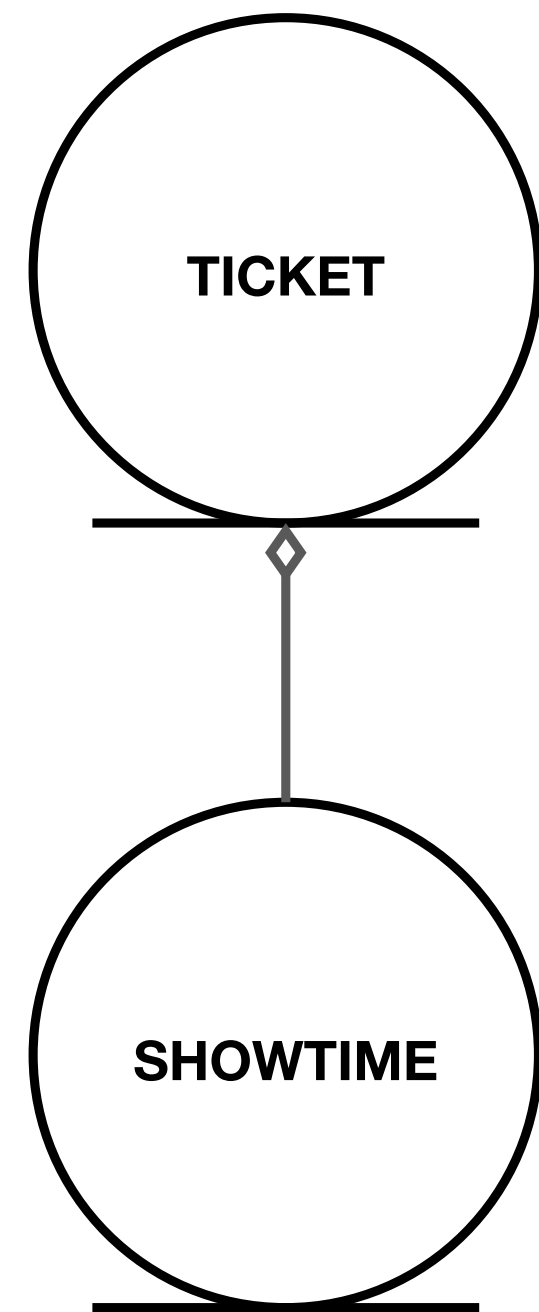
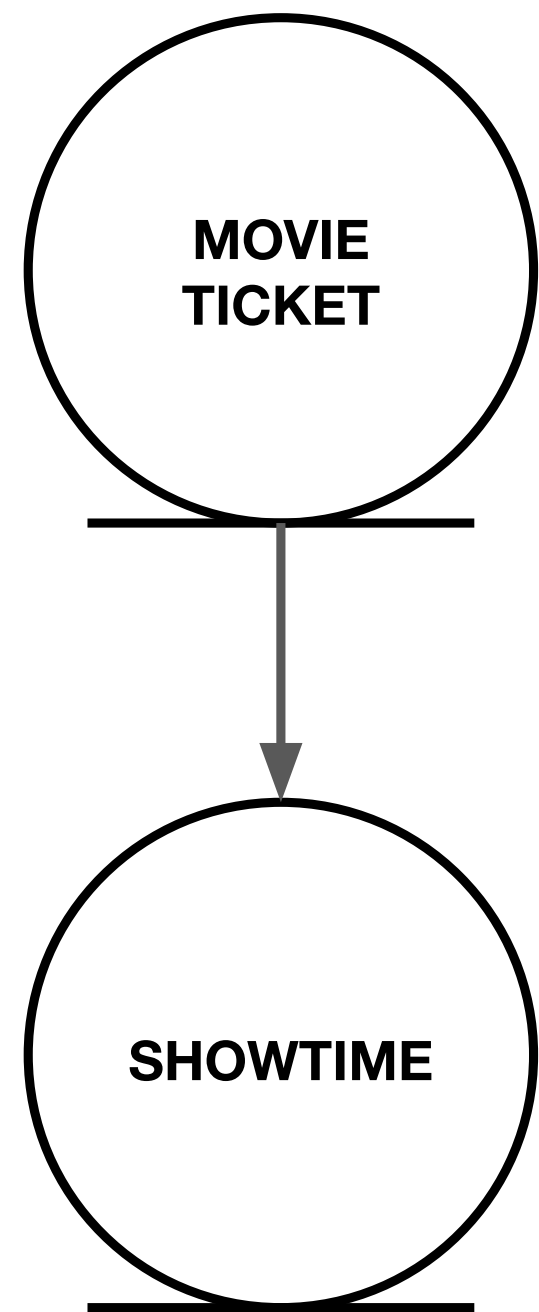
Cycles

→ 4

→ 4A

→ 5

→ 5A



**Boundaries**  
**Associations**  
**Situations**  
**Invariants**  
**Cycles**



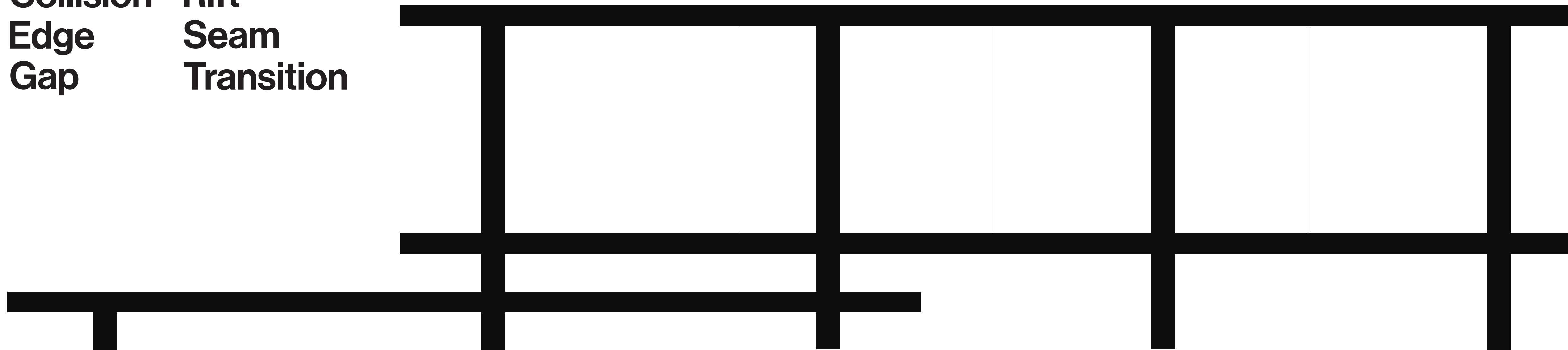


**BECAUSE:  
[REASONS]**

# Boundaries

WHAT THINGS ARE

**Absence**   **Graft**  
**Border**   **Joint**  
**Collision**   **Rift**  
**Edge**   **Seam**  
**Gap**   **Transition**



# Associations

HOW THINGS CONNECT

**Allusion**

**Antecedence**

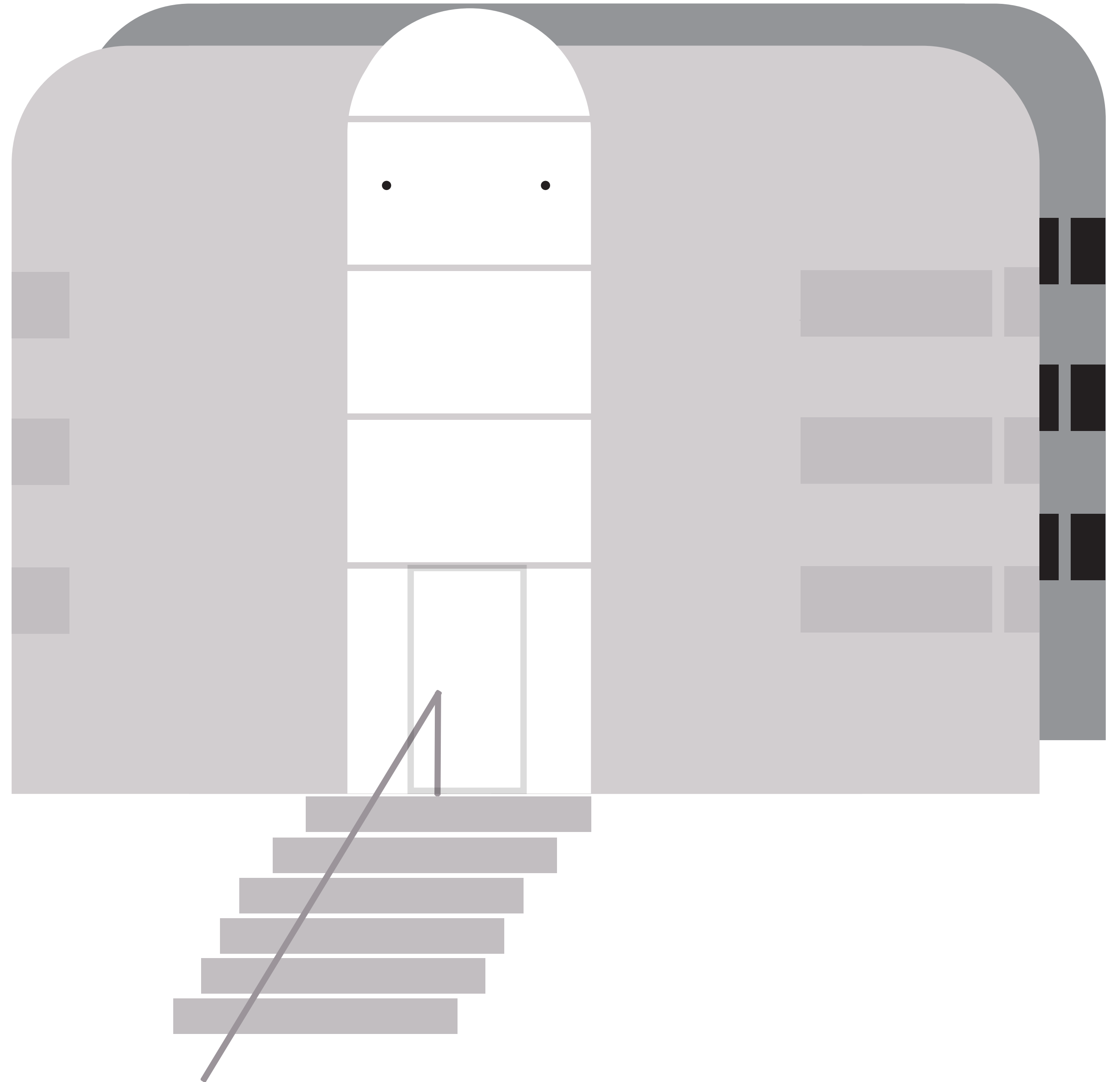
**Connotation**

**Entailment**

**Hetero/Homogeneity**

**Metaphor**

**Progenesis**



# Situations

WHERE THINGS ARE

Adjacency

Down-ness

Emplacement

Juxtaposition

Nesting

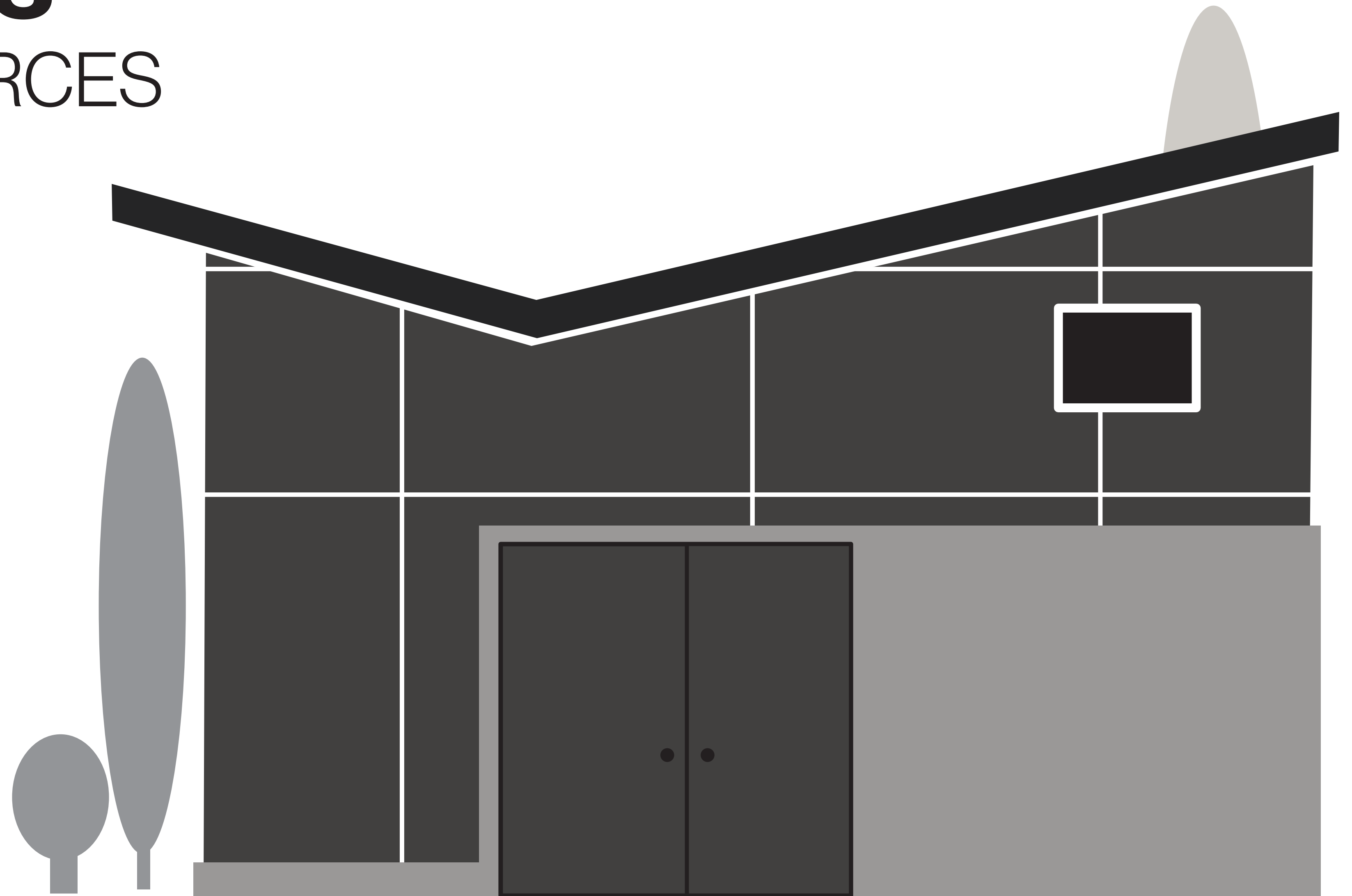
Up-ness



# Invariants

CONSTANT FORCES

Entropy  
Friction  
Gravity  
History



Seattle Garage circa 2000

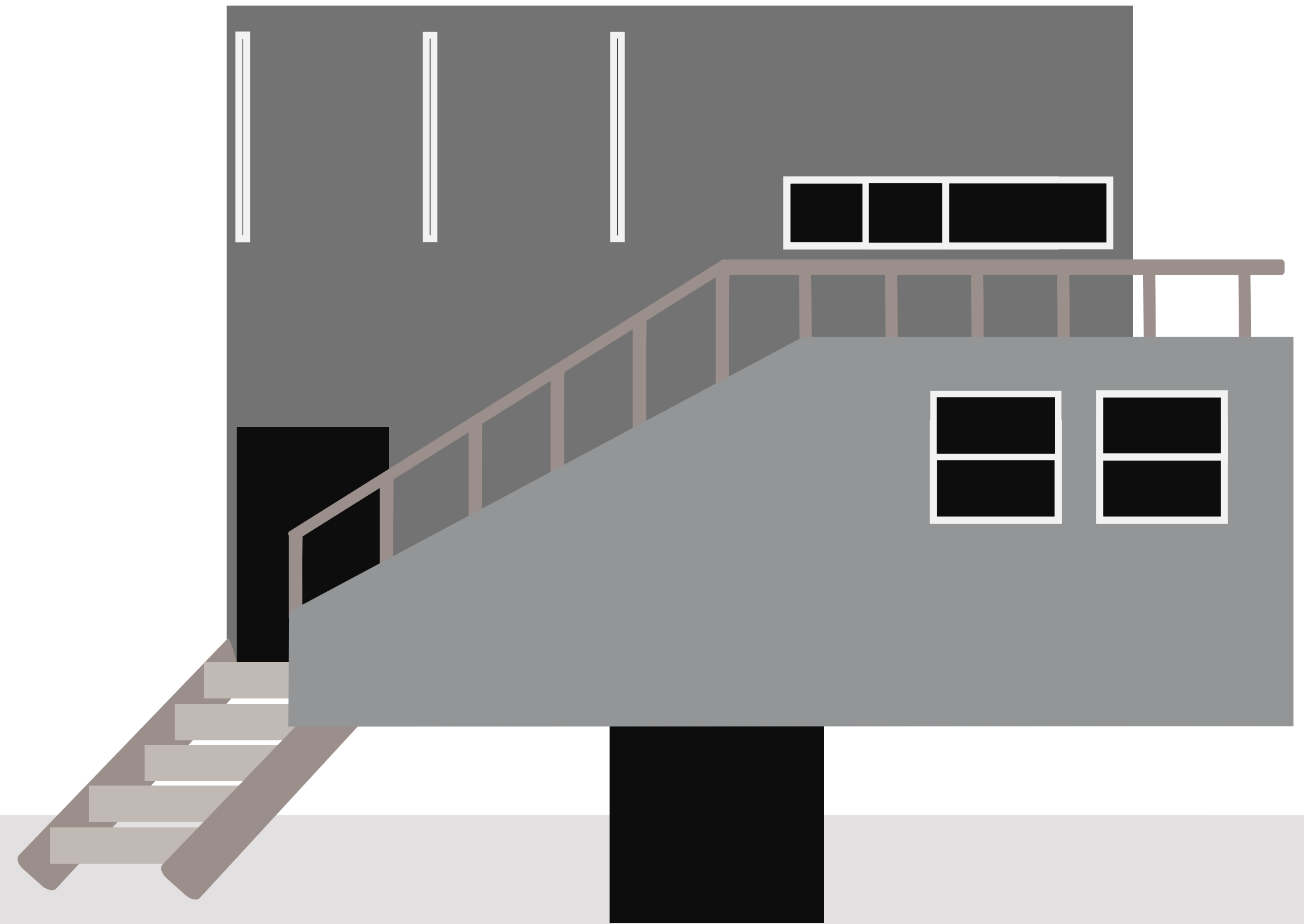


# Cycles

VARIABLE FORCES

**Demand  
Fashion**

**Season  
Supply**



# **BASIC** 5 Ways to See the Architecture of Complex Systems

## **Boundaries**

WHAT THINGS ARE

Absence  
Border  
Collision  
Edge  
Gap  
Graft  
Joint  
Rift  
Seam  
Transition

## **Associations**

HOW THINGS CONNECT

Allusion  
Antecedence  
Connotation  
Entailment  
Hetero/Homogeneity  
Metaphor  
Progenesis

## **Situations**

WHERE THINGS ARE

Adjacency  
Down-ness  
Emplacement  
Juxtaposition  
Nesting  
Up-ness

## **Invariants**

CONSTANT FORCES

Entropy  
Friction  
Gravity  
History

## **Cycles**

VARIABLE FORCES

Demand  
Fashion  
Season  
Supply

# Activity Time

## Boundaries Group

Identify a joint, seam, or transition where one thing stops and another starts. Come up with an explanation for why the boundary exists in this way.

## Associations Group

Enumerate three bases upon which the belonging of things is predicated.

## Situations Group

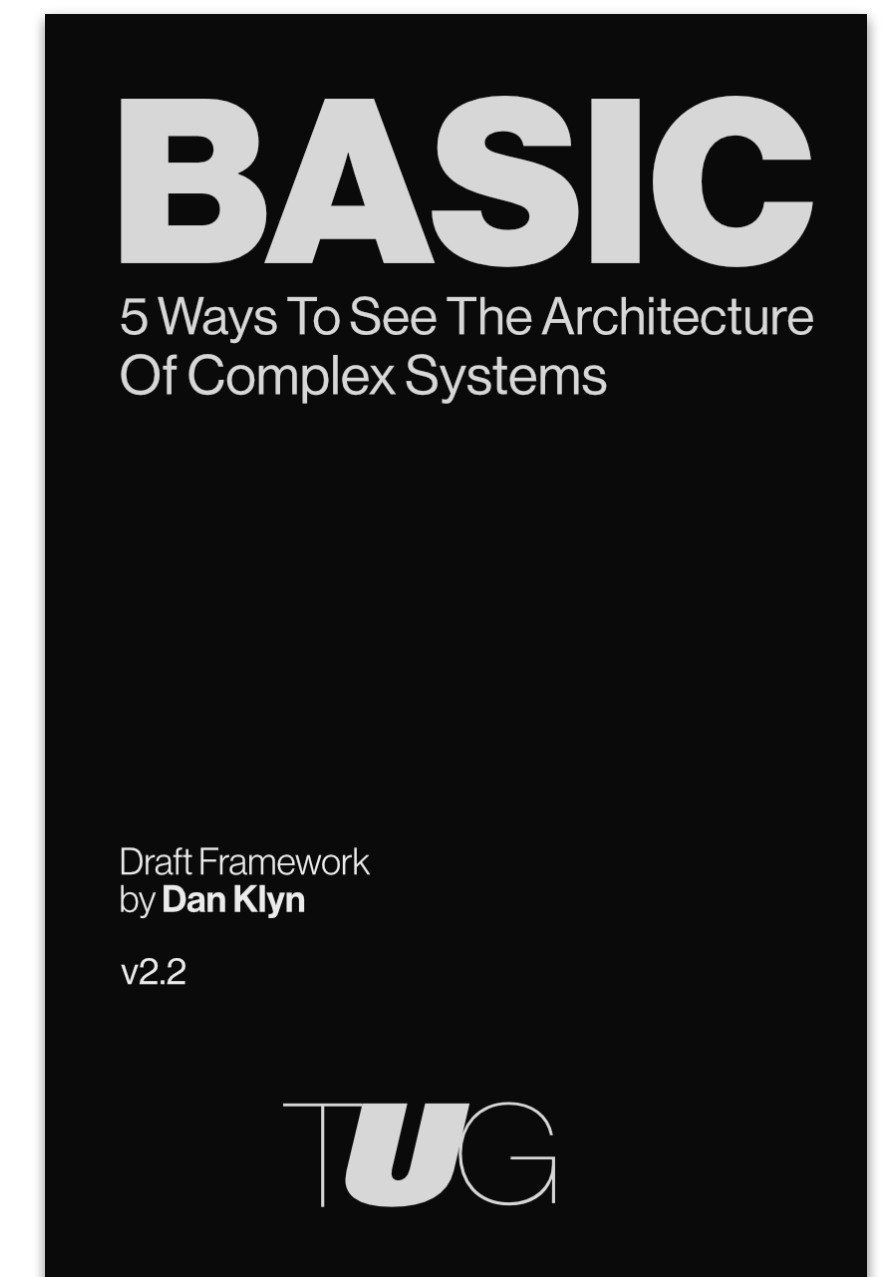
Find two instances where the placement of things changes their meaning or purpose.

## Invariants Group

In rank order, what are the three most powerful constant forces in the environment?

## Cycles Group

What evidence can you find of latent or redundant structures that address forces not currently detectable in the environment?



<https://understandinggroup.com/basic>



End